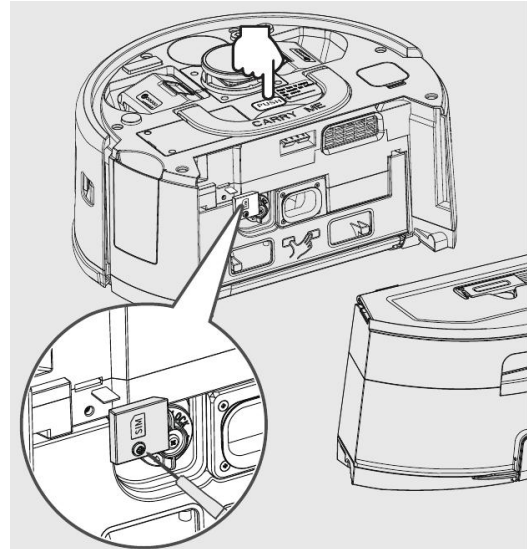


# Cobotic 1900 Network Configuration Guide

## A. Using GSM module for Network Configuration

### 1. SIM Card Installation

- a) Remove the batteries or turn off the robot
- b) Press the PUSH button to remove the dustbin, unscrew the SIM card cover, insert your nano-SIM card into the slot. *Note: The notched corner of the SIM card should face forward, and the chip contacts should face downwards.*

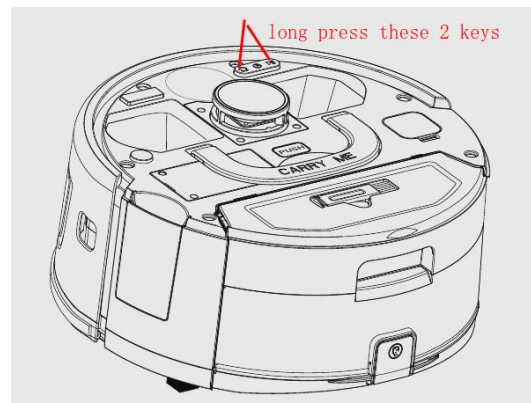


### 2. Power On and Connect to Hotspot

- a) Install the batteries and turn on the robot.
- b) After powering on, wait a moment, and your phone should be able to search for a Wi-Fi hotspot named "**i-teamglobal CB1900**". The default password is "**abc1234**". After connecting to this hotspot, then your mobile device can access the internet through the built-in GSM module now.

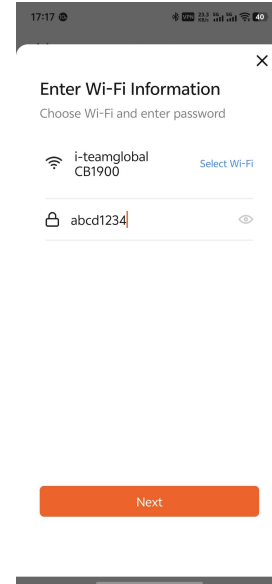
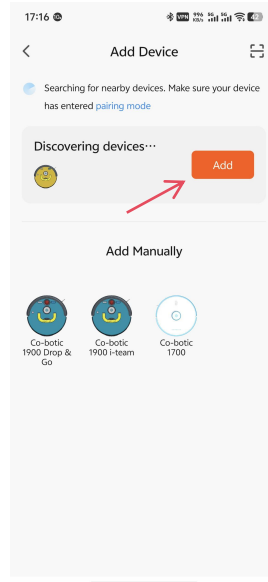
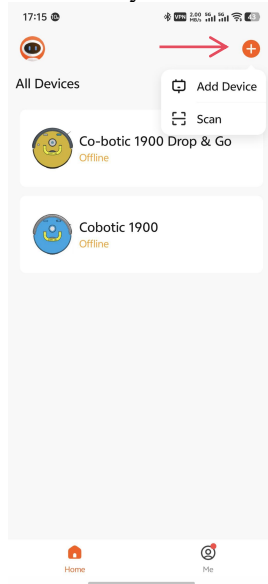
### 3. Enter Network Configuration Mode

Press and hold the "Recharge" and "Clean" buttons on the device for 3 seconds as shown in the picture. Release them after hearing the machine broadcast "**Start pairing the WIFI**", then robot has entered the network configuration mode.

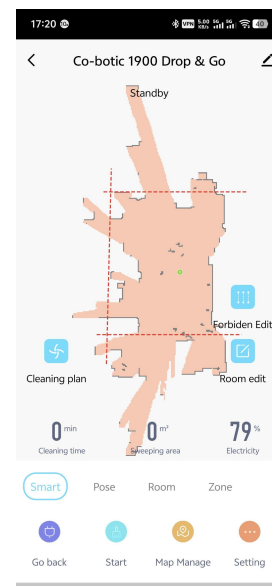
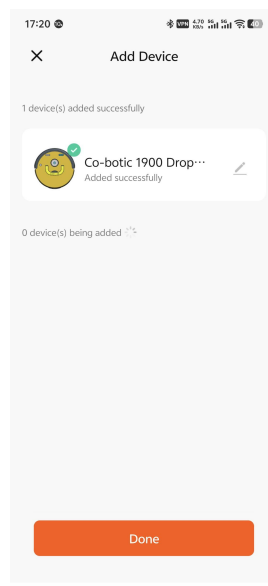
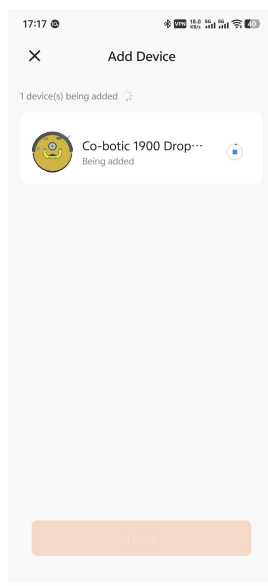


4. **Open Co-botic APP and bind the robot**

- Enable the [bluetooth](#) setting on your mobile device, and grant [Location](#) and [Nearby devices](#) permissions to the Co-botic APP.
- Launch the Co-botic APP, and then click the "+" button in the upper right corner, select "Add Device", wait for the APP to search for nearby bluetooth device, and then click the "Add" button once it discovers the device. Or you can select the right model within the "Add Manually".

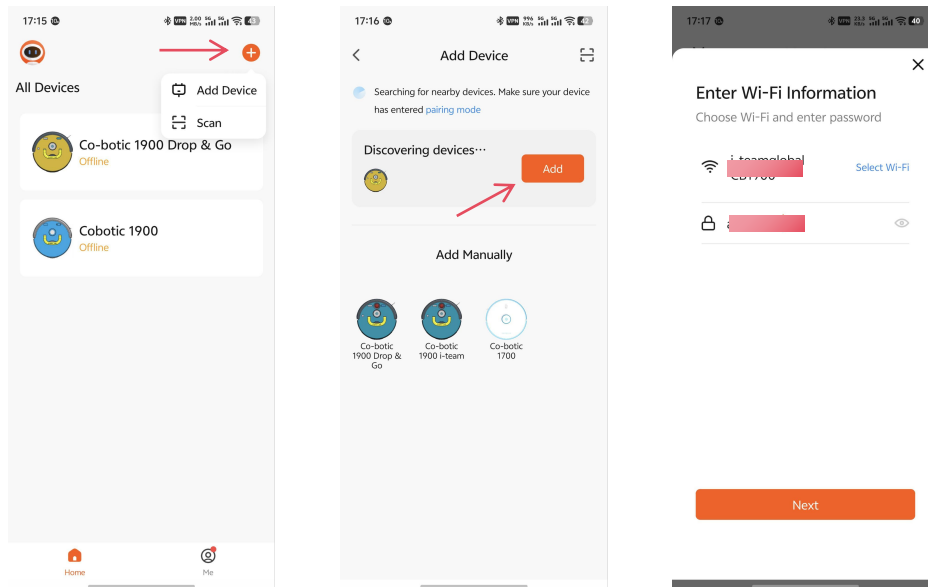


- Enter Hotspot Password  
Make sure the wifi id is "**i-teamglobal CB1900**" and enter the password "**abc1234**", then click Next, and wait a moment, when you hear a voice prompt "*WIFI connection successful*", then the network configuration is done.



## B. Using Home/Workplace Wi-Fi hotspot for Network Configuration

1. Enable the bluetooth setting on your mobile phone, and grant Location and Nearby devices permissions to the Co-botic APP.
2. Power on the robot and then Press and hold the "Recharge" and "Clean" buttons on the device for 3 seconds until you hear "Start pairing the WIFI".
3. Launch the Co-botic APP, and then click the "+" button in the upper right corner, select "Add Device", wait for the APP to search for nearby bluetooth device, and then click the "Add" button once it discovers the device. Or you can select the right model within the "Add Manually".



4. Enter Hotspot Password, then click Next, and wait a moment, when you hear a voice prompt "WIFI connection successfull", then the network configuration is done.

